



# COLOURED BREEDS

SEPTEMBER 2023

# SALES CONTACTS

Semex UK,  
Maple Park, Monkton,  
Prestwick, Ayrshire  
KA9 2RJ

0800 86 88 90  
info@semex.co.uk

## National Sales Manager

Michael Dennison

Tel: 07713 245220  
Email: mdennison@semex.com



## National Solutions Manager

Fearghal Gallagher

Tel: 07990 535613  
Email: fgallagher@semex.com

Semex  
Solutions

## Solutions Consultant

Linsey Maxwell

Tel: 07746 138146  
Email: lmaxwell@semex.com

## Beef Consultant

Philip Halhead

Tel: 07949 733747



### MIDLANDS AND WALES

**Regional Manager: Aran Owen** Part Staffs, Part Cheshire, Part Shropshire  
07815 707588

**David Gadd** Clwyd, Powys, part Shropshire, Gwynedd and Anglesey  
07970 111834

**Fearghal Gallagher** part Cheshire, North Derbys, North Wales, part Staffs  
07990 535613

**Tony Hack** Cardigan and Pembrokeshire  
07765 222972

**Rhys Jones** Dyfed  
07902 278252

**Sally Lloyd** Herefordshire, Gwent  
07805 626155

**Richard Mallett** South Shrops, Hereford and Worcester, part Staffs  
07825 046446

**Rodger Mather** East Midlands and South East Staffs  
07719 708795

**Idris Morgan** Carmarthen  
07783 578848

**Kevin Naughton** North Shropshire, South Cheshire  
07956 492499

**Richard Thomas** Carmarthenshire and Pembrokeshire  
07813 555978

**Will Tucker** South and South East Wales  
07915 881466

### NORTH AND SCOTLAND

**Regional Manager: Michael Dennison**  
07713 245220

**Lizzie Bradley** North Yorkshire, Tyne and Wear, Durham  
07521 922897

**Brian Brumby** Isle of Man  
07624 453625

**Tom Callan** Part Scotland  
07786 631059

**Richard Green** Yorkshire, Norfolk, Suffolk, Bedfordshire, part Derbyshire  
07761 454359

**Robert Hunter** Lanarkshire, Lothian, Fife, Borders  
07774 134787

**Alan Kennedy** Bute  
07712 526443

**Graham Kirby** Lancashire  
07715 478622

**George McConnell** North Ayrshire, Renfrewshire  
07949 310147

**Frances Mellor** part Lancs, Cheshire, Derbyshire & Yorks  
07956 568535

**Adam Montgomerie** Ayrshire  
07821 267354

**John Montgomery** Central Scotland  
07778 478341

**Ian Plews** North Cumbria and South-West Scotland  
07926 883029

**Sammy Sugden** Craven  
07749 108330

### SOUTH

**Andrew Axford** Cornwall  
07771 684294

**David Hawkins** Mid & South Devon  
07841 486628

**Leigh Herrod** Dorset, South and East Somerset  
07917 773229

**Mike Huskins** East Devon and West Dorset  
07909 545426

**Steve Lee** North & West Devon, North Cornwall  
07795 311688

**Seamus McGuinness** Cornwall and South Devon  
07860 113884

**Mark Pickford** Wiltshire, Berks, Glos, Bucks, Hants, Oxfordshire, Northants  
07928 461264

**Jeff Trunkfield** East/West Sussex, Kent, Surrey  
07977 586172

### NORTHERN IRELAND

**Regional Manager: John Berry** Armagh, Fermanagh, Sth Down, Sth Tyrone  
07968 623477

**Steven Brown** part Mid Ulster  
07713 084003

**Claire Hunter** South Antrim  
07841 416313

**William Hunter** West Tyrone, Londonderry  
07740 531051

**Andrew Kennedy** Ballymena, Larne  
07762 168039

**William Kerr** part Antrim  
07956 451000

**Robin Lamb** North Down  
07745 289428

**Clive Noble** Co. Tyrone, Co. Londonderry  
07821 378639

**Shay O'Neill** East Tyrone, North Antrim  
07519 490527

**Robert Stewart** North Down  
07513 468813

## CONTENTS

### AYRSHIRE

- 5 DES COTEAUX ARMAGEDDON
- 5 KAMOURASKA BOURNSTAR
- 6 LA SAPINIÈRE FACYBOB
- 6 PLEIN SOLEIL HACKER
- 7 PLEIN SOLEIL HUNTER

### BRITISH FRIESIAN

- 9 BANKHOUSE ARTHUR
- 9 WHINNOW WEBSITE

### MILKING SHORTHORN

- 11 OCEANBRAE FOSTER
- 11 KUSZAMAR STARGAZER

### JERSEY

- 13 DULET BOWLERS
- 13 LENCREST BROADBAND P
- 14 AVONLEA CHOCOCHIP
- 14 RIVER VALLEY CIRCUS CRAZE
- 15 LENCREST HORIZON
- 15 GUIMO JAMIE
- 16 AUDIBEL JORDAN
- 16 KASH-IN KNOX
- 17 LAITJOIE LIGHTNING

- 17 RIVER VALLEY MAKER
- 18 LONE PINE THOR

### MONTBELIARDE

- 20 MARMADUC
- 20 SANDERO
- 21 OFINS

### FLECKVIEH

- 23 HORIZON-ET P
- 23 GRÜGRU LORBAS P
- 24 ROXEL

### BROWN SWISS

- 26 JOLAHOFS SUPERSTAR DREAMER-ET
- 26 M & M'S APPLE HANK
- 27 BISER'S FILOMEN JINXER
- 27 STUDER'S BS O MALLEY OWEN
- 28 EGOCHS DALLY SIMBABOY

### RED & WHITE

- 30 AOT HICCUP-RED
- 30 AOT HIGHLIFE-RED
- 31 AOT HOLLIMAN-RED
- 31 VOGUE REDEYE-P

## IMMUNITY HEALTH INDEX EXPLAINED



Over the past 10 years dairy farmers worldwide have seen the real advantages of using Immunity+ sires. It is highly heritable, has a huge economic impact, provides for higher quality colostrum and daughters are shown to have 29% less disease.

All Semex sires will now receive an index for Immunity and Calf Immunity, making it even easier to select for high health. The 'next generation' of Immunity+ optimally combines high Immune Response technology (Antibody Mediated Immune Response, Cell Mediated Immune Response and Nitric Oxide), as well as a composite of publicly available disease traits sourced from CDCB, Lactanet and Zoetis. This ensures resulting animals can both mount a strong overall immune response, but also be able to recognize the specific pathogens that cause the costliest diseases on dairies. The index has a mean

of 100, and a standard deviation of 5, with proofs generally ranging from 85-115. Immunity+ bulls will be designated as being superior transmitters of high immune response if they have an Immunity Index  $\geq 105$  and a Calf Immunity Index  $\geq 100$ . Additionally, dairymen taking advantage of Semex's Elevate® genomic testing program will receive two indexes on all tested females, Immunity Index and Calf Immunity Index. These replace the former H(high)-A(average)-L(low) letter codes that were published on tested females.

UK HEALTH & REPRODUCTION	
Immunity	
Calf Immunity	
Somatic Cell Count	
Mastitis Resistance	
Lifespan	
Fertility Index	
Direct Calving Ease %	
Maternal Calving Ease %	
TB Advantage	

UK HEALTH & REPRODUCTION	
Immunity	110
Calf Immunity	106

EXAMPLE

## THE WORLD'S BEST HEALTH INDEX

### PRODUCT KEY

The key offers a basic explanation of the symbols used for the bulls in this catalogue. For more detailed information please visit [www.semex.co.uk](http://www.semex.co.uk) or ask your local Semex Genetic Consultant. N/A, where used in this catalogue, means Not Available.



CALVING EASE  
Easier Calving Sires



FERTILITY FIRST  
High Fertility Sires



ROBOTREADY  
Built for Automation



SEMEX  
More Heifers



POLLED  
Breed-leading  
Polled Sires



RIVER VALLEY  
Breeding



A2A2  
Homozygous A2A2  
carrier sires



IMMUNITY+  
Disease-resistant  
Genetics



GRAZINGPRO  
Pasture Perfect

# AYRSHIRE

5 DES COTEAUX ARMAGEDDON

5 KAMOURASKA BOURNSTAR

6 LA SAPINIERE FACYBOB

6 PLEIN SOLEIL HACKER

7 PLEIN SOLEIL HUNTER



Bull: DES COTEAUX ARMAGEDDON



## DES COTEAUX **ARMAGEDDON**

PRETZEL x REVOLUTION x ROCKSTAR

AI Code: A8979 Reg: 70120430823

Beta casein: A1A2 Kappa casein: AE

AH1F AH2C AHCF TF AMF

Sire: 7 OAKS PRETZEL

Dam: DES COTEAUX REVOLUTION ALEXIE VG-85-3YR-CAN

GDam: DES COTEAUX ROCKSTAR ALEXANDRIE GP-84-2YR-CAN

PLI: £170



### UK PRODUCTION

Dtrs/Hrds	CAN G/G	UK 0/0
Milk	248 kg	44% Rel
Fat	16.9 kg	0.10%
Protein	10.7 kg	0.04%
PLI	£170	44% Rel

### UK HEALTH & REPRODUCTION

Somatic Cell Count	-1
Mastitis Resistance	-
Lifespan	41
Fertility Index	-4.7
Direct Calving Ease %	-
Maternal Calving Ease %	-
TB Advantage	-
Temperament	-
Ease of Milking	-
Enviro Cow	1.0

### SEMEXX TRAITS\*

Immunity	100
Calf Immunity	99

### CANADIAN CONFORMATION

Dtrs/Hrds in UK Type (see right)	Rel 50%
Conformation	8
Mammary System	8
Feet & Legs	8
Dairy Strength	2
Rump	-2

### UK TYPE

	Dtrs/Hrds	CAN G/G	UK 0/0		44% Rel
			-2	-1	
<b>Type Merit</b>	+0.80				
<b>Mammary</b>	+0.40				
<b>Legs &amp; Feet</b>	+1.00				
Stature	+0.30				
Chest Width	-0.60				
Body Depth	-0.60				
Angularity	+0.80				
Rump Angle	-0.80				
Rump Width	+0.30				
Rear Leg Side	-0.70				
Foot Angle	+1.00				
Fore Udd. Att.	+0.50				
Rear Udd. Ht.	+1.10				
Udder Support	-0.30				
Udder Depth	+1.10				
Front Teat Pl.	-0.60				
Teat Length	-0.30				
Teat Pos. Side	-				

Proof Source: **AUGUST 2023** UK Production and Health and Reproduction: AHDB Dairy, Semex traits\*, Immunity Indices: Semex Alliance

Bull: KAMOURASKA BOURNSTAR



## KAMOURASKA **BOURNSTAR**

MELBOURNE x DIVINE x ORRA

AI Code: A8987 Reg: 70120696569

Beta casein: A2A2 Kappa casein: AA

AH1F AH2F AHCF TF AMF

Sire: MARILIE MELBOURNE

Dam: KAMOURASKA DIVINE VG-87-3YR-CAN

GDam: KAMOURASKA ORRA XUBY VG-85-4YR-CAN 20\*

PLI: £239



### UK PRODUCTION

Dtrs/Hrds	CAN G/G	UK 0/0
Milk	543 kg	43% Rel
Fat	21.9 kg	-0.01%
Protein	17.9 kg	0.00%
PLI	£239	43% Rel

### UK HEALTH & REPRODUCTION

Somatic Cell Count	4
Mastitis Resistance	-
Lifespan	3
Fertility Index	-1.0
Direct Calving Ease %	-
Maternal Calving Ease %	-
TB Advantage	-
Temperament	-
Ease of Milking	-
Enviro Cow	1.4

### SEMEXX TRAITS\*

Immunity	100
Calf Immunity	102

### CANADIAN CONFORMATION

Dtrs/Hrds in UK Type (see right)	Rel 50%
Conformation	5
Mammary System	6
Feet & Legs	2
Dairy Strength	6
Rump	-4

### UK TYPE

	Dtrs/Hrds	CAN G/G	UK 0/0		48% Rel
			-2	-1	
<b>Type Merit</b>	0.00				
<b>Mammary</b>	-0.10				
<b>Legs &amp; Feet</b>	+0.10				
Stature	+0.50				
Chest Width	+0.50				
Body Depth	0.00				
Angularity	+0.90				
Rump Angle	+1.30				
Rump Width	-0.30				
Rear Leg Side	+0.10				
Foot Angle	+0.70				
Fore Udd. Att.	-0.10				
Rear Udd. Ht.	+0.70				
Udder Support	-0.10				
Udder Depth	-0.50				
Front Teat Pl.	-1.00				
Teat Length	-1.20				
Teat Pos. Side	-				

Proof Source: **AUGUST 2023** UK Production and Health and Reproduction: AHDB Dairy, Semex traits\*, Immunity Indices: Semex Alliance



Bull: La Sapiniere Facybob

## LA SAPINIERE **FACYBOB**

**ROB X PERFECTER X REALITY**

AI Code: A9024 Reg: 70111432820

Beta casein: A1A2 Kappa casein: AA

AHIF AH2F AHCF TF AMF

Sire: DES COTEAUX ROB

Dam: LA SAPINIERE FACYBER VG-88-3YR-CAN

GDam: LA SAPINIERE FACYBEYÂ

**PLI: £80**



Bull: Plein Soleil Hacker

## PLEIN SOLEIL **HACKER**

**HUNTER x ANIMATE x JEOPARDY**

AI Code: A8984 Reg: 70120867422

Beta casein: A1A2 Kappa casein: AA

AHIF AH2C AHCF TF

Sire: PLEIN SOLEIL HUNTER by AMAZING

Dam: PLEIN SOLEIL ANIMATE HYLLA EX-93-4E-CAN 1\*

GDam: PLEIN SOLEIL JEOPARDY HANDY VG-85-3YR-CAN

**PLI: £257**



UK PRODUCTION		
Dtrs/Hrds	CAN G/G	UK 0/0
Milk	259 kg	44% Rel
Fat	13.8 kg	0.05%
Protein	7.9 kg	-0.01%
PLI	£80	44% Rel

UK HEALTH & REPRODUCTION	
Somatic Cell Count	0
Mastitis Resistance	-
Lifespan	15
Fertility Index	-4.1
Direct Calving Ease %	-
Maternal Calving Ease %	-
TB Advantage	-
Temperament	-
Ease of Milking	-
Enviro Cow	0.5

SEMEX TRAITS*	
Immunity	101
Calf Immunity	104

CANADIAN CONFORMATION	
Dtrs/Hrds in UK Type (see right)	Rel 49%
Conformation	4
Mammary System	3
Feet & Legs	4
Dairy Strength	4
Rump	1

UK TYPE		Dtrs/Hrds CAN G/G UK 0/0 49% Rel				
		-2	-1	0	+1	+2
Type Merit	-0.10					
Mammary	-0.20					
Legs & Feet	0.00					
Stature	+0.70					
Chest Width	+1.50					
Body Depth	+0.10					
Angularity	+0.60					
Rump Angle	0.00					
Rump Width	+0.80					
Rear Leg Side	+0.30					
Foot Angle	+0.40					
Fore Udd. Att.	+0.60					
Rear Udd. Ht.	-0.10					
Udder Support	-0.30					
Udder Depth	+0.60					
Front Teat Pl.	-1.50					
Teat Length	-1.00					
Teat Pos. Side	-					

Proof Source: **AUGUST 2023** UK Production and Health and Reproduction: AHDB Dairy, Semex traits\*, Immunity Indices: Semex Alliance

UK PRODUCTION		
Dtrs/Hrds	US/CAN 0/0	UK 0/0
Milk	485 kg	39% Rel
Fat	20.9 kg	0.01%
Protein	16.1 kg	0.00%
PLI	£257	40% Rel

UK HEALTH & REPRODUCTION	
Somatic Cell Count	-5
Mastitis Resistance	-
Lifespan	36
Fertility Index	-5.1
Direct Calving Ease %	-
Maternal Calving Ease %	-
TB Advantage	-
Temperament	-
Ease of Milking	-
Enviro Cow	1.7

SEMEX TRAITS*	
Immunity	101
Calf Immunity	102

US PTAT	
Dtrs/Hrds in UK Type (see right)	Rel 27%
PTAT	0.00
Udder Composite	0.00
Feet & Leg Composite	0.00
Body Composite	
Dairy Composite	

UK TYPE		Dtrs/Hrds US/CAN 0/0 UK 0/0 43% Rel				
		-2	-1	0	+1	+2
Type Merit	+1.00					
Mammary	+0.70					
Legs & Feet	+0.90					
Stature	+0.40					
Chest Width	-0.90					
Body Depth	-0.70					
Angularity	+0.70					
Rump Angle	+0.40					
Rump Width	-0.10					
Rear Leg Side	0.00					
Foot Angle	+0.30					
Fore Udd. Att.	+0.10					
Rear Udd. Ht.	+1.00					
Udder Support	+0.80					
Udder Depth	+0.70					
Front Teat Pl.	-1.20					
Teat Length	-0.20					
Teat Pos. Side	-					

Proof Source: **AUGUST 2023** UK Production and Health and Reproduction: AHDB Dairy, Semex traits\*, Immunity Indices: Semex Alliance

Bull: PLEIN SOLEIL HUNTER



## PLEIN SOLEIL HUNTER

AMAZING x ROCKSTAR x OBLIQUE

AI Code: A9034      Reg: 70110368187

Beta casein: A1A2      Kappa casein: AA

AH1F AH2C AHCF TF AMF

Sire: DES COTEAUX AMAZING

Dam: PLEIN SOLEIL HIZI VG-86-3YR-CAN

GDam: PLEIN SOLEIL HEYDA EX-90-4E-CAN 4\*

PLI: £278



UK PRODUCTION		
Dtrs/Hrds	CAN G/G	UK 0/0
Milk	380 kg	49% Rel
Fat	22.6 kg	0.11%
Protein	15.4 kg	0.04%
PLI	£278	49% Rel

### UK HEALTH & REPRODUCTION

Somatic Cell Count	-7
Mastitis Resistance	-
Lifespan	30
Fertility Index	-5.3
Direct Calving Ease %	-
Maternal Calving Ease %	-
TB Advantage	-
Temperament	-
Ease of Milking	-
Enviro Cow	1.9

### SEMEX TRAITS\*

Immunity	104
Calf Immunity	100

### CANADIAN CONFORMATION

Dtrs/Hrds in UK Type (see right)	Rel 54%
Conformation	8
Mammary System	8
Feet & Legs	9
Dairy Strength	0
Rump	2

	UK TYPE	Dtrs/Hrds				
		-2	-1	0	+1	+2
Type Merit	+0.90					
Mammary	+0.50					
Legs & Feet	+0.80					
Stature	0.00					
Chest Width	-1.00					
Body Depth	-1.10					
Angularity	+0.50					
Rump Angle	+0.20					
Rump Width	+0.10					
Rear Leg Side	-0.50					
Foot Angle	+0.90					
Fore Udd. Att.	0.00					
Rear Udd. Ht.	+0.80					
Udder Support	+0.60					
Udder Depth	+0.90					
Front Teat Pl.	-1.30					
Teat Length	-0.10					
Teat Pos. Side	-					

Proof Source: AUGUST 2023 UK Production and Health and Reproduction: AHDB Dairy, Semex traits\*, Immunity Indices: Semex Alliance

# THE SEMEX AI TRAINING ACADEMY

Your cows —

Their schedule —

## Take Control



Scan here to register your interest

# BRITISH FRIESIAN

9 BANKHOUSE ARTHUR

9 WHINNOW WEBSITE







Bull: Bankhouse Arthur

## BANKHOUSE ARTHUR

JOSEPH X PATROL RC X GRIETMAN

AI Code: BF1239 Reg: 20102214302312  
Beta casein: N/A Kappa casein: N/A

Sire: GOONHILLY JOSEPH  
Dam: BANKHOUSE PATROL GILL  
GDam: BANKHOUSE GREITMAN GILL

PLI: £57



### UK PRODUCTION

Dtrs /Hrds	CAN 0/0	UK 0/0
Milk	-11 kg	67%Rel
Fat	1.7 kg	0.02%
Protein	3kg	0.04%
PLI	£57	64%Rel

### UK HEALTH & REPRODUCTION

Somatic Cell Count	5
Mastitis Resistance	-1
Lifespan (Days)	6
Fertility Index	-2.9
Direct Calving Ease %	1
Maternal Calving Ease %	0.3
TB Advantage	2
Temperament	1.64
Ease of Milking	1.33
Enviro Cow	0.2

Proof Source AUGUST 2023 UK Production, Health & Reproduction and UK Type, AHDB Dairy, Holstein UK

UK TYPE	Dtrs/Hrds	Can 0/0	UK 0/0	54%Rel					
				-2	-1	0	+1	+2	
Type Merit	+0.6								
Mammary	+0.82								
Legs & Feet	+0.04								
Stature	+0.2								
Chest Width	+0.64								
Body Depth	+0.8								
Rump Angle	-0.13								
Rump Width	+0.55								
Rear Leg Side	+0.68								
Foot Angle	-0.58								
Fore Udd. Att.	+0.33								
Rear Udd. Ht.	+0.65								
Udder Support	+0.69								
Udder Depth	-0.17								
Teat Length	+0.06								
Front Teat Pl.	+0.16								
Rear Teat Pl.	+0.64								



Bull: Whinnow Website

## WHINNOW WEBSITE

TOPMAN X BETA X ROCKET 3

AI Code: BF1202 Reg: 20100756602563  
Beta casein: N/A Kappa casein: N/A

Sire: TRUMPET TOPMAN  
Dam: LAKEMEAD WENDY 35 BFE94(4)  
GDam: LAKEMEAD WENDY 29 BFE92(3)

PLI: £-56



### UK PRODUCTION

Dtrs /Hrds	CAN 0/0	UK 0/0
Milk	44 kg	68%Rel
Fat	3.5 kg	0.01%
Protein	2.1 kg	0.01%
PLI	£-56	65%Rel

### UK HEALTH & REPRODUCTION

Somatic Cell Count	9
Mastitis Resistance	0
Lifespan (Days)	-27
Fertility Index	-2.9
Direct Calving Ease %	0.3
Maternal Calving Ease %	0.2
TB Advantage	-1.3
Temperament	0.49
Ease of Milking	0.52
Enviro Cow	-0.6

Proof Source AUGUST 2023 UK Production, Health & Reproduction and UK Type, AHDB Dairy, Holstein UK

UK TYPE	Dtrs/Hrds	Can 0/0	UK 0/0	55%Rel					
				-2	-1	0	+1	+2	
Type Merit	+0.51								
Mammary	+0.54								
Legs & Feet	+0.32								
Stature	+1.36								
Chest Width	+1.21								
Body Depth	+1.19								
Rump Angle	+0.42								
Rump Width	+0.94								
Rear Leg Side	+0.16								
Foot Angle	+0.19								
Fore Udd. Att.	+0.70								
Rear Udd. Ht.	-0.09								
Udder Support	+1.04								
Udder Depth	+0.38								
Teat Length	-0.44								
Front Teat Pl.	+1.60								
Rear Teat Pl.	+1.04								

# MILKING SHORTHORN

- 11 OCEANBRAE FOSTER
- 11 KUSZAMAR MERCURY STARGAZER



*Patty Jones*

# GENOMIC

Bull: Oceanbrae Foster



## OCEANBRAE FOSTER

PINGERLY X LOGIC X FAWN'S C.D

AI Code: S2144      Reg: 6912765097  
Beta casein: A1A2      Kappa casein: AB

Sire: TREETON PINGERLY  
Dam: OCEANBRAE LOGIC FEATHER ET EX92  
GDam: OCEANBRAE FAWN'S ACCENT-P ET EX94

### CAN PRODUCTION

Dtrs /Hrds	33/10	
Milk	-45kg	70%Rel
Fat	8 kg	+0.17%
Protein	6 kg	0.16%
LPI	+1873	64%Rel

### CAN HEALTH & REPRODUCTION

Herd Life	98
Somatic Cell Score	107
Daughter Fertility	100
Body Condition Score	112
Calving Ability	98
Daughter Calving Ability	98
Milking Speed	104
Milking Temperament	106



G Dam: Oceanbrae Fawn's Accent P

### CAN CONFORMATION

		Dtrs/Hrds	11/25	58%Rel			
			-10	-5	0	+5	+10
Conformation	11						
Mammary	9						
Legs & Feet	8						
Stature	8T						
Chest Width	11						
Body Depth	12						
Rump Angle	7H						
Rump Width	7						
Rear Leg Side	11S						
Foot Angle	10						
Fore Udd. Att.	8						
Rear Udd. Ht.	4						
Udder Support	5						
Udder Depth	6S						
Teat Length	0						
Front Teat Pl.	0						

Proof Source AUGUST 2023 CDN

# PROVEN

Bull: KUZAMAR MERCURY STARGAZER



## KUZAMAR MERCURY STARGAZER

REMINGTON X MERCURY X MUDSLINGER

AI Code: S2192      Reg: 693147202490  
Beta casein: A2A2      Kappa casein: AB

Sire: MORNING DEW OMY REMINGTON EXP  
Dam: KUZAMAR MERCURY  
GDam: KUZAMAR MUDSLINGER



### PA CAN CONFORMATION

Dtrs /Hrds	0/0	
Milk	-135 kg	15%Rel
Fat	-9 kg	-0.06%
Protein	0 kg	+0.07%
LPI	1199	

### PA CAN HEALTH & REPRODUCTION

Herd Life	97
Somatic Cell Score	104
Daughter Fertility	101
Body Condition Score	102
Calving Ability	99
Daughter Calving Ability	101
Milking Speed	100
Milking Temperament	97



Dam: KUZAMAR MERCURY

# MILKING SHORTHORN

### PA CAN CONFORMATION

		Dtrs/Hrds	40/13	69%Rel			
			-10	-5	0	+5	+10
Conformation	8						
Mammary	-2						
Legs & Feet	-1						

- 73.3% Purity
- Unique sire stack
- From award-winning KUSZLYK herd
- Strong proofs for udder conformation
- Plenty of show style

Proof Source AUGUST 2023 American Milking Shorthorn Society

# JERSEY

- 13 DULET BOWLERS
- 13 LENCREST BROADBAND P
- 14 AVONLEA CHOCOCHIP
- 14 RIVER VALLEY CIRCUS CRAZE
- 15 LENCREST HORIZON
- 15 GUIMO JAMIE
- 16 AUDIBEL JORDAN
- 16 KASH-IN KNOX
- 17 LAITJOIE LIGHTNING
- 17 RIVER VALLEY MAKER
- 18 LONE PINE THOR



*Holly McFarlane*

Bull: Dulet Bowlers



## DULET BOWLERS

CONTOUR X RUFUS X JOEL

AI Code: J2884 Reg: 76120396348  
 Beta casein: A2A2 Kappa casein: BB  
**JHIC JNSF**

Sire: LENCREST CONTOUR  
 Dam: DULET RUFUS BOOM EX-90-4YR-CAN  
 GDam: DULET JOEL BRIOCHE EX-95-2E-CAN 4\*

PLI: £138



UK PRODUCTION		
Dtrs/Hrds	CAN G/G	UK 0/0
Milk	345 kg	57% Rel
Fat	15.0 kg	-0.06%
Protein	13.7 kg	0.01%
PLI	£138	56% Rel

### UK HEALTH & REPRODUCTION

Somatic Cell Count	6
Mastitis Resistance	-
Lifespan	-18
Fertility Index	-5.2
Direct Calving Ease %	-
Maternal Calving Ease %	-
TB Advantage	-
Temperament	-
Ease of Milking	-
Enviro Cow	0.8

### SEMEX TRAITS\*

Immunity	100
Calf Immunity	101

### CANADIAN CONFORMATION

Dtrs/Hrds in UK Type (see right)	Rel 55%
Conformation	11
Mammary System	8
Feet & Legs	6
Dairy Strength	12
Rump	4

	UK TYPE	Dtrs/Hrds CAN G/G UK 0/0 60% Rel				
		-2	-1	0	+1	+2
<b>Type Merit</b>	+0.70					
<b>Mammary</b>	+1.50					
<b>Legs &amp; Feet</b>	+0.60					
Stature	+1.00					
Chest Width	+0.10					
Body Depth	+1.20					
Angularity	+2.20					
Rump Angle	-0.30					
Rump Width	+0.20					
Rear Leg Side	-0.80					
Foot Angle	+0.50					
Fore Udd. Att.	+1.50					
Rear Udd. Ht.	+2.00					
Udder Support	+0.60					
Udder Depth	+0.40					
Front Teat Pl.	+0.80					
Teat Length	+0.30					
Teat Pos. Side	-					
Locomotion	-0.60					

Proof Source: **AUGUST 2023** UK Production and Health and Reproduction: AHDB Dairy. Semex traits\*, Immunity Indices: Semex Alliance

Bull: Lencrest Broadband P



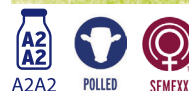
## LENCREST BROADBAND P

DEMOS-P X VIVALDI X PREMIER

AI Code: J2932 Reg: 76120345574  
 Beta casein: A2A2 Kappa casein: BB  
**JHIC JNSF**

Sire: ALL LYNN'S DEMOS-P  
 Dam: LENCREST COCOPUFF EX-93-2E-CAN 2\*  
 GDam: LENCREST PREMIER COCO EX-92-2E-CAN 3\*

PLI: £237



UK PRODUCTION		
Dtrs/Hrds	CAN G/G	UK 0/0
Milk	334 kg	59% Rel
Fat	20.0 kg	0.03%
Protein	16.1 kg	0.05%
PLI	£237	58% Rel

### UK HEALTH & REPRODUCTION

Somatic Cell Count	-1
Mastitis Resistance	-
Lifespan	45
Fertility Index	-5.2
Direct Calving Ease %	-
Maternal Calving Ease %	-
TB Advantage	-
Temperament	-
Ease of Milking	-
Enviro Cow	1.7

### SEMEX TRAITS\*

Immunity	96
Calf Immunity	95

### CANADIAN CONFORMATION

Dtrs/Hrds in UK Type (see right)	Rel 59%
Conformation	9
Mammary System	7
Feet & Legs	1
Dairy Strength	12
Rump	4

	UK TYPE	Dtrs/Hrds CAN G/G UK 0/0 62% Rel				
		-2	-1	0	+1	+2
<b>Type Merit</b>	+0.10					
<b>Mammary</b>	+0.60					
<b>Legs &amp; Feet</b>	0.00					
Stature	+0.10					
Chest Width	+1.40					
Body Depth	+1.80					
Angularity	+1.20					
Rump Angle	-0.40					
Rump Width	0.00					
Rear Leg Side	+0.10					
Foot Angle	-0.40					
Fore Udd. Att.	+1.20					
Rear Udd. Ht.	+0.80					
Udder Support	+0.90					
Udder Depth	-0.30					
Front Teat Pl.	+0.50					
Teat Length	+0.40					
Teat Pos. Side	-					
Locomotion	-0.20					

Proof Source: **AUGUST 2023** UK Production and Health and Reproduction: AHDB Dairy. Semex traits\*, Immunity Indices: Semex Alliance

Bull: Avonlea Chocochip



## AVONLEA CHOCOCHIP

VIP x PREMIER x ACTION

AI Code: J2777 Reg: 76111353298

Beta casein: A2A2 Kappa casein: BB  
JHIF JNSF

Sire: RIVER VALLEY VENUS VIP  
Dam: AVONLEA PREMIER CHOCOLATE CHIP EX-96-2E-CAN 3\*  
GDam: AVONLEA KOOKIE DOUGH EX-93-4YR-CAN

PLI: £-130



UK PRODUCTION		
Dtrs/Hrds	CAN G/G	UK 0/0
Milk	-165 kg	60% Rel
Fat	-11.5 kg	-0.05%
Protein	-4.3 kg	0.04%
PLI	£-130	58% Rel

### UK HEALTH & REPRODUCTION

Somatic Cell Count	6
Mastitis Resistance	-
Lifespan	33
Fertility Index	2.4
Direct Calving Ease %	-
Maternal Calving Ease %	-
TB Advantage	-
Temperament	-
Ease of Milking	-
Enviro Cow	-0.7

### SEMEX TRAITS\*

Immunity	102
Calf Immunity	100

### CANADIAN CONFORMATION

Dtrs/Hrds in UK Type (see right)	Rel 62%
Conformation	15
Mammary System	11
Feet & Legs	13
Dairy Strength	10
Rump	5

UK TYPE		Dtrs/Hrds CAN G/G UK 0/0 62% Rel				
		-2	-1	0	+1	+2
Type Merit	+0.80					
Mammary	+1.20					
Legs & Feet	+0.60					
Stature	+1.60					
Chest Width	+0.30					
Body Depth	+1.00					
Angularity	+0.70					
Rump Angle	-0.20					
Rump Width	+1.00					
Rear Leg Side	-0.70					
Foot Angle	+1.40					
Fore Udd. Att.	+1.70					
Rear Udd. Ht.	+1.40					
Udder Support	+1.50					
Udder Depth	+1.50					
Front Teat Pl.	-0.30					
Teat Length	+0.50					
Teat Pos. Side	-					
Locomotion	+0.10					

Proof Source: **AUGUST 2023** UK Production and Health and Reproduction: AHDB Dairy, Semex traits\*, Immunity Indices: Semex Alliance

Bull: River Valley Circus Craze-ET



## RIVER VALLEY CIRCUS CRAZE

LEMONHEAD X PHAROAH X VALENTINO

AI Code: J2569 Reg: 7675341001

Beta casein: A2A2 Kappa casein: BB  
JHIF JNSF

Sire: STEINHAUERS SAMSON LEMONHEAD  
Dam: GOFF PHAROAH CIRCUS ACT EX90  
GDam: GOFF VALENTINO 9595 VG84

PLI: £289



UK PRODUCTION		
Dtrs/Hrds	CAN 308/159	UK 199/64
Milk	554 kg	98% Rel
Fat	20.2 kg	-0.15%
Protein	16.2 kg	-0.08%
PLI	£289	95% Rel

### UK HEALTH & REPRODUCTION

Somatic Cell Count	-3
Mastitis Resistance	0
Lifespan	48
Fertility Index	0.2
Direct Calving Ease %	-
Maternal Calving Ease %	-
TB Advantage	0.8
Temperament	-0.70
Ease of Milking	0.00
Enviro Cow	1.6

### SEMEX TRAITS\*

Immunity	104
Calf Immunity	102

### CANADIAN CONFORMATION

Dtrs/Hrds in UK Type (see right)	Rel 94%
Conformation	4
Mammary System	7
Feet & Legs	4
Dairy Strength	-4
Rump	-9

UK TYPE		Dtrs/Hrds CAN 261/135 UK 99/25 97% Rel				
		-2	-1	0	+1	+2
Type Merit	+0.90					
Mammary	+1.30					
Legs & Feet	+0.20					
Stature	+1.00					
Chest Width	-1.20					
Body Depth	-0.60					
Angularity	+0.80					
Rump Angle	-0.40					
Rump Width	+1.20					
Rear Leg Side	+0.20					
Foot Angle	+0.80					
Fore Udd. Att.	+0.40					
Rear Udd. Ht.	+2.40					
Udder Support	+3.70					
Udder Depth	+1.60					
Front Teat Pl.	+0.20					
Teat Length	+4.50					
Teat Pos. Side	-0.40					
Locomotion	+0.30					

Proof Source: **AUGUST 2023** UK Production and Health and Reproduction: AHDB Dairy, Semex traits\*, Immunity Indices: Semex Alliance



Bull: Guimo Jamie

## LENCREST HORIZON ET

JOYRIDE X VIVALDI X PREMIER

AI Code: J2935 Reg: 76120767577  
 Beta Casein: A2A2 Kappa Casein: BB  
**JHIF JNSF**

Sire: RIVER VALLEY JOYRIDE  
 Dam: LENCREST COCOPUFF EX-93-2E-CAN 2\*  
 GDam: LENCREST PREMIER COCO EX-92-2E-CAN 3\*

PLI: £76



UK PRODUCTION		
Dtrs/Hrds	US/CAN 0/0	UK 0/0
Milk	48 kg	59% Rel
Fat	9.3 kg	0.11%
Protein	8.1 kg	0.11%
PLI	£76	58% Rel
UK HEALTH & REPRODUCTION		
Somatic Cell Count		5
Mastitis Resistance		-
Lifespan		3
Fertility Index		-1.8
Direct Calving Ease %		-
Maternal Calving Ease %		-
TB Advantage		-
Temperament		-
Ease of Milking		-
Enviro Cow		0.5
SEMEX TRAITS*		
Immunity		103
Calf Immunity		101
US PTAT		
Dtrs/Hrds in UK Type (see right)		Rel 79%
PTAT		1.10
Udder Composite		4.5
Feet & Leg Composite		
Body Composite		
Dairy Composite		

UK TYPE	Dtrs/Hrds	US/CAN 0/0				
		-2	-1	0	+1	+2
Type Merit	-0.30					
Mammary	+0.40					
Legs & Feet	+0.10					
Stature	+0.90					
Chest Width	+1.20					
Body Depth	+1.90					
Angularity	+1.50					
Rump Angle	-0.80					
Rump Width	+0.90					
Rear Leg Side	-0.50					
Foot Angle	+0.40					
Fore Udd. Att.	+1.00					
Rear Udd. Ht.	+1.10					
Udder Support	+1.10					
Udder Depth	-0.40					
Front Teat Pl.	-0.20					
Teat Length	+1.50					
Teat Pos. Side	-					
Locomotion	-0.80					

Proof Source: **AUGUST 2023** UK Production and Health and Reproduction: AHDB Dairy, Semex traits\*, Immunity Indices: Semex Alliance



Bull: Guimo Jamie

## GUIMO JAMIE

MATT X DYNAMIC X PARAMOUNT

AI Code: J2692 Reg: 76110194407  
 Beta Casein: A2A2 Kappa Casein: BB  
**JHIF JNSF**

Sire: WILSONVIEW IF MATT  
 Dam: GUIMO DYNAMIC JOYCE EX-90-3E-CAN 1\*  
 GDam: FERMAR PARAMOUNT JOY EX-95%-8YR-USA

PLI: £3



UK PRODUCTION		
Dtrs/Hrds	CAN 432/189	UK 0/0
Milk	139 kg	80% Rel
Fat	10.6 kg	0.05%
Protein	7.8 kg	0.04%
PLI	£3	80% Rel
UK HEALTH & REPRODUCTION		
Somatic Cell Count		-5
Mastitis Resistance		-2
Lifespan		-21
Fertility Index		-7.2
Direct Calving Ease %		-
Maternal Calving Ease %		-
TB Advantage		-
Temperament		0.80
Ease of Milking		1.30
Enviro Cow		0.2
SEMEX TRAITS*		
Immunity		105
Calf Immunity		99
CANADIAN CONFORMATION		
Dtrs/Hrds in UK Type (see right)		Rel 95%
Conformation		1
Mammary System		-1
Feet & Legs		3
Dairy Strength		2
Rump		-5

UK TYPE	Dtrs/Hrds	CAN 348/169				
		-2	-1	0	+1	+2
Type Merit	+0.20					
Mammary	+0.20					
Legs & Feet	-0.10					
Stature	+1.10					
Chest Width	+0.80					
Body Depth	+1.00					
Angularity	+0.70					
Rump Angle	-0.50					
Rump Width	-0.10					
Rear Leg Side	+1.50					
Foot Angle	-0.20					
Fore Udd. Att.	-0.10					
Rear Udd. Ht.	+0.80					
Udder Support	+0.90					
Udder Depth	+0.10					
Front Teat Pl.	+1.60					
Teat Length	+0.50					
Teat Pos. Side	+0.90					
Locomotion	+0.50					

Proof Source: **AUGUST 2023** UK Production and Health and Reproduction: AHDB Dairy, Semex traits\*, Immunity Indices: Semex Alliance

Bull: Audibel Jordan



## AUDIBEL JORDAN

WESTSTAR X PREMIER X PARAMOUNT

AI Code: J2700 Reg: 763024634

Beta casein: A2A2 Kappa casein: BB **JHIF JNSF**

Sire: VERJATIN WESTSTAR  
 Dam: GUIMO PREMIER JADE EX91  
 GDam: FERMAR PARAMOUNT JOY EX95

PLI: £-50



UK PRODUCTION		
Dtrs/Hrds	CAN 429/215	UK 0/0
Milk	82 kg	78% Rel
Fat	7.1 kg	0.04%
Protein	5.8 kg	0.04%
PLI	£-50	77% Rel

### UK HEALTH & REPRODUCTION

Somatic Cell Count	-1
Mastitis Resistance	-
Lifespan	0
Fertility Index	-6.0
Direct Calving Ease %	-
Maternal Calving Ease %	-
TB Advantage	-
Temperament	0.70
Ease of Milking	-1.30
Enviro Cow	0.2

### SEMEX TRAITS\*

Immunity	97
Calf Immunity	98

### CANADIAN CONFORMATION

Dtrs/Hrds in UK Type (see right)	Rel 94%
Conformation	7
Mammary System	5
Feet & Legs	2
Dairy Strength	10
Rump	7

### UK TYPE

	Dtrs/Hrds	CAN 318/165 UK 7/6 87% Rel				
		-2	-1	0	+1	+2
Type Merit	+0.10					
Mammary	+1.00					
Legs & Feet	+0.20					
Stature	+1.20					
Chest Width	+0.60					
Body Depth	+1.40					
Angularity	+1.70					
Rump Angle	-0.40					
Rump Width	+0.90					
Rear Leg Side	-1.10					
Foot Angle	+1.00					
Fore Udd. Att.	+1.30					
Rear Udd. Ht.	+2.10					
Udder Support	-0.90					
Udder Depth	+1.00					
Front Teat Pl.	+0.80					
Teat Length	-0.40					
Teat Pos. Side	-0.20					
Locomotion	+0.30					

Proof Source: **AUGUST 2023** UK Production and Health and Reproduction: AHDB Dairy, Semex traits\*, Immunity Indices: Semex Alliance

Bull: Kashi-in Knox



## KASH-IN KNOX

JOEL x COMERICA x ROCKET

AI Code: J2937 Reg: 763221921607

Beta casein: A1A2 Kappa casein: BB

Beta casein: A1A2 Kapa casein: AA

Sire: GUIMO JOEL **JHIF JNSF**  
 Dam: STONEY POINT COMERICA KATHIE EX-95%-8YR-USA

GDam: STONEY POINT ROCKET KAY EX-90%-3YR-USA

PLI: £-50



UK PRODUCTION		
Dtrs/Hrds	CAN G/G	UK 0/0
Milk	-267 kg	61% Rel
Fat	-11.4 kg	0.06%
Protein	-7.3 kg	0.05%
PLI	£-244	60% Rel

### UK HEALTH & REPRODUCTION

Somatic Cell Count	8
Mastitis Resistance	-
Lifespan	-21
Fertility Index	-4.5
Direct Calving Ease %	-
Maternal Calving Ease %	-
TB Advantage	-
Temperament	-
Ease of Milking	-
Enviro Cow	-1.4

### SEMEX TRAITS\*

Immunity	105
Calf Immunity	102

### CANADIAN CONFORMATION

Dtrs/Hrds in UK Type (see right)	Rel 62%
Conformation	14
Mammary System	11
Feet & Legs	12
Dairy Strength	11
Rump	0

### UK TYPE

	Dtrs/Hrds	CAN G/G UK 0/0 62% Rel				
		-2	-1	0	+1	+2
Type Merit	+1.40					
Mammary	+1.90					
Legs & Feet	+0.60					
Stature	+1.20					
Chest Width	+2.50					
Body Depth	+2.00					
Angularity	+0.20					
Rump Angle	-1.80					
Rump Width	+2.50					
Rear Leg Side	-0.70					
Foot Angle	+1.00					
Fore Udd. Att.	+2.80					
Rear Udd. Ht.	+1.60					
Udder Support	+1.00					
Udder Depth	+1.20					
Front Teat Pl.	+1.00					
Teat Length	-0.10					
Teat Pos. Side	-					
Locomotion	+0.30					

Proof Source: **AUGUST 2023** UK Production and Health and Reproduction: AHDB Dairy, Semex traits\*, Immunity Indices: Semex Alliance





Bull: Laitjoie Lightning

## LAITJOIE LIGHTNING

STEVE X VIVALDI X PREMIER

AI Code: J2832 Reg: 76120219769

Beta Casein: A2A2 Kappa casein: BB

JHIF JNSF

Sire: CDF IRWIN STEVE

Dam: GUIMO VIVALDI LYSANNE

GDam: GUIMO PREMIER LYS

PLI: £159



UK PRODUCTION		
Dtrs/Hrds	CAN G/G	UK 0/0
Milk	160 kg	61% Rel
Fat	20.8 kg	0.20%
Protein	11.7 kg	0.09%
PLI	£159	59% Rel

### UK HEALTH & REPRODUCTION

Somatic Cell Count	4
Mastitis Resistance	-
Lifespan	18
Fertility Index	-8.0
Direct Calving Ease %	-
Maternal Calving Ease %	-
TB Advantage	-
Temperament	-
Ease of Milking	-
Enviro Cow	1.4

### SEMEX TRAITS\*

Immunity	110
Calf Immunity	107

### CANADIAN CONFORMATION

Dtrs/Hrds in UK Type (see right)	Rel 61%
Conformation	10
Mammary System	7
Feet & Legs	8
Dairy Strength	10
Rump	9

### UK TYPE

	Dtrs/Hrds	CAN G/G				
		-2	-1	0	+1	+2
Type Merit	+0.10					
Mammary	+0.40					
Legs & Feet	+0.10					
Stature	+0.30					
Chest Width	-0.20					
Body Depth	+0.90					
Angularity	+1.50					
Rump Angle	+0.40					
Rump Width	-0.10					
Rear Leg Side	+0.80					
Foot Angle	-0.30					
Fore Udd. Att.	+0.10					
Rear Udd. Ht.	+1.40					
Udder Support	+1.00					
Udder Depth	-0.40					
Front Teat Pl.	0.00					
Teat Length	+0.70					
Teat Pos. Side	-					
Locomotion	-0.80					

Proof Source: **AUGUST 2023** UK Production and Health and Reproduction: AHDB Dairy. Semex traits\*, Immunity Indices: Semex Alliance



Bull: Rivervalley Maker-et

## RIVERVALLEY MAKER ET

LEMONHEAD X MACHETE X RENEGADE

AI Code: J2749 Reg: 763133234491

Beta Casein: A2A2 Kappa casein: BB

JHIF JNSF

Sire: STEINHAUERS SAMSON LEMONHEAD

Dam: SC/RV MACHETE MAID 301 VG-83%-3YR-USA

GDam: SUNSET CANYON RENEGADE C MAID VG-88%-3YR-USA

PLI: £262



UK PRODUCTION		
Dtrs/Hrds	CAN 41/31	UK 0/0
Milk	282 kg	74% Rel
Fat	16.0 kg	0.01%
Protein	13.4 kg	0.04%
PLI	£262	72% Rel

### UK HEALTH & REPRODUCTION

Somatic Cell Count	-7
Mastitis Resistance	-
Lifespan	33
Fertility Index	2.1
Direct Calving Ease %	-
Maternal Calving Ease %	-
TB Advantage	-
Temperament	-
Ease of Milking	-
Enviro Cow	1.5

### SEMEX TRAITS\*

Immunity	101
Calf Immunity	99

### CANADIAN CONFORMATION

Dtrs/Hrds in UK Type (see right)	Rel 77%
Conformation	1
Mammary System	3
Feet & Legs	-2
Dairy Strength	-1
Rump	-4

### UK TYPE

	Dtrs/Hrds	CAN 42/30				
		-2	-1	0	+1	+2
Type Merit	+0.40					
Mammary	+0.50					
Legs & Feet	+0.10					
Stature	+0.50					
Chest Width	-1.00					
Body Depth	-0.80					
Angularity	+1.30					
Rump Angle	0.00					
Rump Width	+0.20					
Rear Leg Side	+0.90					
Foot Angle	-0.10					
Fore Udd. Att.	-1.10					
Rear Udd. Ht.	+1.30					
Udder Support	0.00					
Udder Depth	-1.30					
Front Teat Pl.	+0.40					
Teat Length	+2.80					
Teat Pos. Side	-					
Locomotion	-0.10					

Proof Source: **AUGUST 2023** UK Production and Health and Reproduction: AHDB Dairy. Semex traits\*, Immunity Indices: Semex Alliance



Bull: Lone Pine Thor

## LONE PINE THOR

CONTOUR X VICTORIOUS X GRANDIOUS

AI Code: J2883      Reg: 7614038479  
Beta casein: A2A2      Kappa casein: BB

JHIC JNSF

Sire: LENCREST CONTOUR  
Dam: LONE PINE VCTRIIOUS THUNDERSTRUCK  
GDam: LONE PINE GRANDIOUS THUNDER

PLI: £124



UK PRODUCTION		
Dtrs/Hrds	CAN G/G	UK 0/0
Milk	299 kg	57% Rel
Fat	18.3 kg	0.04%
Protein	15.4 kg	0.06%
PLI	£124	56% Rel

UK HEALTH & REPRODUCTION	
Somatic Cell Count	10
Mastitis Resistance	-
Lifespan	-42
Fertility Index	-7.8
Direct Calving Ease %	-
Maternal Calving Ease %	-
TB Advantage	-
Temperament	-
Ease of Milking	-
Enviro Cow	0.6

SEMEX TRAITS*	
Immunity	92
Calf Immunity	98

CANADIAN CONFORMATION	
Dtrs/Hrds in UK Type (see right)	Rel 56%
Conformation	10
Mammary System	5
Feet & Legs	5
Dairy Strength	13
Rump	9

	UK TYPE	Dtrs/Hrds				
		-2	-1	0	+1	+2
Type Merit	+0.90					
Mammary	+1.00					
Legs & Feet	+1.00					
Stature	+1.50					
Chest Width	+1.40					
Body Depth	+2.00					
Angularity	+2.10					
Rump Angle	+0.30					
Rump Width	+1.30					
Rear Leg Side	+0.70					
Foot Angle	-0.10					
Fore Udd. Att.	+0.90					
Rear Udd. Ht.	+1.40					
Udder Support	+1.10					
Udder Depth	-0.40					
Front Teat Pl.	+0.70					
Teat Length	+0.50					
Teat Pos. Side	-					
Locomotion	+1.20					



ai24 gives you the powerful cow monitoring tool that allows you total control of herd health and fertility

Scan here to find out more →



A brown and white speckled cow stands in a grassy field. The cow is facing right and has a white body with large brown patches. In the background, there are green trees and a wooden fence. The sky is clear and blue.

20 MARMADUC

20 SANDERO

21 OFINS

MONTBELLIARDE



## MARMADUC

JIBICE X CORTIL X CAIMAN

AI Code: MB2331      Reg: 282525813768  
Beta casein: A2A2      Kappa casein: BB

Sire: JIBICE  
Dam: HONGROISE



COOPEX PRODUCTION		
Dtrs /Hrds	1132/803	
Milk	1017kg	95%Rel
Fat	45kg	+0.06%
Protein	41 kg	+0.09%

COOPEX FUNCTIONAL	
Milking Speed	111
Temperament	113
Calving Ease	95
Daughter Calving Ease	95
Clinical Mastitis	-0.1
SCS	+0.8
Cow Fertility	+1.2
Heifer Fertility	+1.2
int.Calv. 1st AI	-2.4
Productive Life	+0.2

Udder specialist  
with extreme  
components.

COOPEX TYPE	Dtrs/Hrds					242/195	88%Rel
	76	88	100	112	124		
Type	114						
Mammary	124						
Legs & Feet	110						
Stature	107						
Chest Width	88						
Body Depth	97						
Rump Angle	108						
Rump Width	86						
Rear Leg Side	74						
Foot Angle	108						
Fore Udd. Att.	144						
Rear Udd. Ht.	109						
Udder Support	101						
Udder Depth	108						
Teat Length	102						

Proof Source AUGUST 2023, Swiss Genetics



## SANDERO

OSSITO X LOTMAN X HACKER

AI CODE MB2505      Reg: 8844343151  
Beta Casein: A2A2      Kappa casein: BB

Sire: OSSITO  
Dam: LOTMAN



COOPEX PRODUCTION		
Dtrs /Hrds		0/0
Milk	1251kg	75%Rel
Fat	51 kg	+0.02%
Protein	43 kg	+0.04%

COOPEX FUNCTIONAL	
Milking Speed	122
Temperament	127
Calving Ease	92
Daughter Calving Ease	95
Clinical Mastitis	0
SCS	+0.2
Cow Fertility	+0.7
Heifer Fertility	-0.7
int.Calv. 1st AI	+0.6
Productive Life	+2.2

Massive Milk + Solid  
Bulls

COOPEX TYPE	Dtrs/Hrds					0/0	63%Rel
	76	88	100	112	124		
Type	130						
Mammary	123						
Legs & Feet	118						
Stature	116						
Chest Width	122						
Body Depth	116						
Rump Angle	94						
Rump Width	98						
Rear Leg Side	85						
Foot Angle	105						
Fore Udd. Att.	99						
Rear Udd. Ht.	104						
Udder Support	108						
Udder Depth	118						
Teat Length	116						

Proof Source AUGUST 2023, Swiss Genetics

# LOOK NO FURTHER THAN SEMEX FOR ALL YOUR DIY AI CONSUMABLES NEEDS

WE SUPPLY EVERYTHING FROM LIQUID NITROGEN TOP-UPS AND CONSUMABLES



CALL US FOR MORE INFORMATION: 0800 86 88 90

## GENOMIC

## MONTBELIARDE



### OFINS

MITSOUKO X JIBICE X GALOPIN

AI Code: MB2429 Reg: 286365518857

Beta casein: A2A2 Kappa casein: BB

Sire: MITSOUKO

Dam: MALIGNÉ

#### COOPEX PRODUCTION

Dtrs /Hrds	2/2	
Milk	717kg	75%Rel
Fat	28 kg	-0.02%
Protein	23kg	-0.02%

#### COOPEX FUNCTIONAL

Milking Speed	104
Temperament	129
Calving Ease	84
Daughter Calving Ease	95
Clinical Mastitis	-0.6
SCS	+1.2
Cow Fertility	+0.3
Heifer Fertility	+0.9
inf. Calv. 1st AI	+0.6
Productive Life	+0.1

High index, quiet temperament with a balanced linear.

#### COOPEX TYPE

Type	Dtrs/Hrds	2/2		65%Rel		
		76	88	100	112	124
Mammary	130					
Legs & Feet	135					
Stature	103					
Chest Width	120					
Body Depth	110					
Rump Angle	123					
Rump Width	106					
Rear Leg Side	121					
Foot Angle	120					
Fore Udd. Att.	105					
Rear Udd. Ht.	119					
Udder Support	128					
Udder Depth	111					
Teat Length	124					
	115					

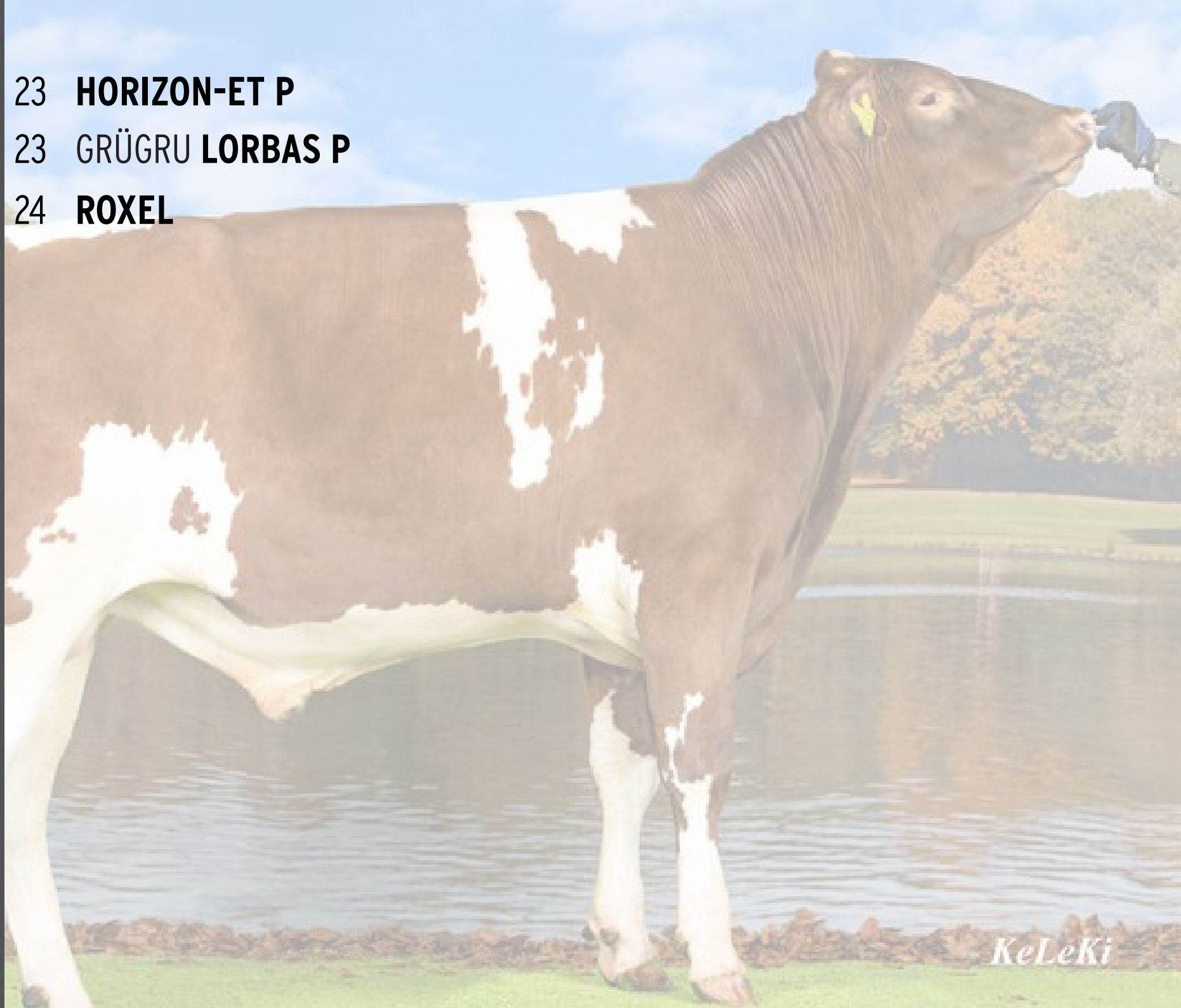
Proof Source AUGUST 2023, COOPEX.COM

# FLECKVIEH

23 **HORIZON-ET P**

23 GRÜGRU **LORBAS P**

24 **ROXEL**



*KeLeKi*

Bull: Horizon-ET-P



## HORIZON-ET P

HARDY X GREGOR X STOCKERE

AI Code: SM0525    Reg: 23120152974133  
Beta casein: A1A2    Kappa casein: AB

Sire: TRACHSEL'S HARDY  
Dam: GREGOR OKTAVIA  
GDam: LAJACOTTERIE SOKRATES GREGOR STOCKERE ILLFORD OLGA



### SWISS PRODUCTION

Dtrs	CHE 0	
Milk	395 kg	55%Rel
Fat	18 kg	+0.02%
Protein	15 kg	+0.01%
-	-	-

### SWISS FUNCTIONAL TRAITS

Somatic Cell Score	99
Mastitis Resistance	102
Productive Life	113
Fertility Daughters	111
Persistency	95
Calving Ease	95
Calving Ease Daughters	100
Milking Speed	109
Milking Temperament	107

Production specialist  
with quality udders

### SWISS LINEAR TRAITS

	Dtrs	0	- %Rel			
		80	90	100	110	120
Global Note	114					
Mammary	115					
Legs & Feet	109					
Stature	102					
Chest Width	102					
Body Depth	98					
Rump Angle	97					
Rump Width	114					
Rear Leg Side	97					
Foot Angle	94					
Fore Udd. Att.	113					
Rear Udd. Ht.	113					
Udder Support	102					
Udder Depth	108					
Teats	103					

Proof Source AUGUST 2023, SWISS GENETICS

Bull: Grügru Lorbas P



## GRÜGRU LORBAS P

LUCKY X RENATO X PASTERNAK

AI Code: SM0459    Reg: 23120146772875  
Beta casein: A2A2    Kappa casein: AB

Sire: ZIMMERVIEW LUCKY  
Dam: GRÜGRU RENATO WALINKA EX90  
GDam: SANYA



### SWISS PRODUCTION

Dtrs	CHE 81	
Milk	153 kg	82%Rel
Fat	41 kg	+0.44%
Protein	23 kg	+0.22%
-	-	-

### SWISS FUNCTIONAL TRAITS

Somatic Cell Score	101
Mastitis Resistance	98
Productive Life	112
Fertility Daughters	94
Persistency	107
Calving Ease	119
Calving Ease Daughters	104
Milking Speed	118
Milking Temperament	113

Udder specialist with  
extreme components

### SWISS LINEAR TRAITS

	Dtrs	22	- %Rel			
		80	90	100	110	120
Global Note	124					
Mammary	134					
Legs & Feet	104					
Stature	108					
Chest Width	103					
Body Depth	100					
Rump Angle	99					
Rump Width	111					
Rear Leg Side	82					
Foot Angle	104					
Fore Udd. Att.	123					
Rear Udd. Ht.	128					
Udder Support	104					
Udder Depth	127					
Teats	107					

Proof Source AUGUST 2023, SWISS GENETICS

SCAN  
TO VIEW  
ONLINE



Daughter: Roxel cinderella

## ROXEL

**SARINO X INCAS X USRER**

AI Code: SM0458      Reg: 23120120769556

Beta casein: AIA1      Kappa casein: AA

Sire: MANITOU SARINO

Dam: INCAS ROXANE

GDam: USRER BRUNETTE



### SWISS PRODUCTION

Dtrs	CHE 159	
Milk	554 kg	96%Rel
Fat	25 kg	+0.03%
Protein	18 kg	-0.01%
-	-	-

### SWISS FUNCTIONAL TRAITS

Somatic Cell Score	119
Mastitis Resistance	110
Productive Life	117
Fertility Daughters	88
Persistence	102
Calving Ease	91
Calving Ease Daughters	85
Milking Speed	109
Milking Temperament	111

Robot Ready

### SWISS LINEAR TRAITS

	Dtrs	118	80	90	100	110	120
Global Note	129						
Mammary	134						
Legs & Feet	116						
Stature	95						
Chest Width	106						
Body Depth	104						
Rump Angle	100						
Rump Width	111						
Rear Leg Side	99						
Foot Angle	102						
Fore Udd. Att.	116						
Rear Udd. Ht.	128						
Udder Support	127						
Udder Depth	114						
Teats	108						

Proof Source AUGUST 2023, SWISS GENETICS



# The Semex Beef Catalogue



A large brown cow is the central focus, standing in a grassy field. In the background, there is a calm lake reflecting the sky and trees. The sky is blue with some clouds. The cow has a yellow tag in its ear.

26 JOLAHOFS SUPERSTAR **DREAMER-ET**

26 M & M'S APPLE **HANK-ET**

27 BISER'S FILOMEN **JINXER**

27 STUDER'S BS O MALLEY **OWEN**

28 EGOCHS DALLY **SIMBABOY**

*KeLeKi*

**BROWN SWISS**



Bull: JOLAHOFS SUPERSTAR DREAMER-ET

### JOLAHOFS SUPERSTAR DREAMER-ET

KIBA X SIMBABOY X DALLY

AI Code: BRI345 Reg: 31120069742559

Beta casein: A2A2 Kappa casein: BB

Sire: SUPERBROWN KIBA SUPERSTAR

Dam: JOLAHOFS SIMBABOY DAVIDE

GDam: EGOCHS DALLY SIMBABOY JOLAHOFS GLENN DIRONA

PLI: £67



UK PRODUCTION		
Dtrs /Hrds	CAN 0/0	UK 0/0
Milk	-159 kg	71%Rel
Fat	1.2 kg	+0.12%
Protein	2.5 kg	+0.12%
PLI	£67	-

UK HEALTH & REPRODUCTION	
Somatic Cell Count	3
Mastitis Resistance	0
Lifespan (Days)	0
Fertility Index	3.0
Direct Calving Ease %	-
Maternal Calving Ease %	-
TB Advantage	-
Temperament	-
Ease of Milking	-
Enviro Cow	-

SWISS CONFORMATION	
Dtrs /Hrds in UK Type Chart (see right)	
Final Score	121
Mammary System	130
Feet & Legs	120
Frame	113
Rump	108

UK TYPE	Dtrs/Hrds	Can 0/0 UK 0/0 - %Rel				
		-2	-1	0	+1	+2
Type Merit	+2.3					
Mammary	+3.8					
Legs & Feet	+0.7					
Stature	+0.9					
Chest Width	+0.1					
Body Depth	+1.3					
Rump Angle	-1.4					
Rump Width	-0.5					
Rear Leg Side	+0.8					
Foot Angle	+1.5					
Fore Udd. Att.	+6.2					
Rear Udd. Ht.	+1.4					
Udder Support	+1.3					
Udder Depth	+6					
Teat Length	+1.7					

Proof Source AUGUST 2023 UK Production, Health & Reproduction and UK Type, AHDB Dairy, Swiss Conformation, Swissgenetics



Bull: M & M's Apple Hank-Et

### M & M'S APPLE HANK-ET

APPLE X BIVER X FANTASTIC

AI Code: BR1419 Reg: 31120162591085

Beta casein: A2A2 Kappa casein: AB

Sire: JOLAHOFS SASCHA APPLE

Dam: DUSS BS BIVER HAPPY EX90

GDam: DUSS BS FANTASTIC ESPANIA EX91

PLI: £289



UK PRODUCTION		
Dtrs /Hrds	CAN 0/0	UK 0/0
Milk	144 kg	49%Rel
Fat	7.5 kg	0.02%
Protein	7.0 kg	0.02%
PLI	£289	-

UK HEALTH & REPRODUCTION	
Somatic Cell Count	-22
Mastitis Resistance	-3
Lifespan (Days)	11
Fertility Index	4.5
Direct Calving Ease %	-
Maternal Calving Ease %	-
TB Advantage	-
Temperament	-
Ease of Milking	-
Enviro Cow	-

SWISS CONFORMATION	
Dtrs /Hrds in UK Type Chart (see right)	
Final Score	117
Mammary System	128
Feet & Legs	116
Frame	105
Rump	104

UK TYPE	Dtrs/Hrds	Can 0/0 UK 0/0 - %Rel				
		-2	-1	0	+1	+2
Type Merit	+1.95					
Mammary	+3.30					
Legs & Feet	+1.70					
Stature	+1.10					
Chest Width	+0.4					
Body Depth	-0.2					
Rump Angle	-0.2					
Rump Width	-0.2					
Rear Leg Side	+1.20					
Foot Angle	+0.30					
Fore Udd. Att.	+2.90					
Rear Udd. Ht.	+3.40					
Udder Support	+3.80					
Udder Depth	+5.30					
Teat Length	-0.70					

Proof Source AUGUST 2023 UK Production, Health & Reproduction and UK Type, AHDB Dairy, Swiss Conformation, Swissgenetics



Bull: Biser's Filomen Jinxer

## BISER'S FILOMEN **JINXER**

**OMALLEY X JINXOR X NESTA**

AI Code: BR1409      Reg: 31120156850594

Beta casein: A2A2      Kappa casein: BB

Sire: OMALLEY

Dam: KALINGEN JINXOR JINX

GDam: JOLAHOFS NESTA JINXOR

**PLI: £282**



UK PRODUCTION		
Dtrs /Hrds	CAN 0/0	UK 0/0
Milk	169 kg	50%Rel
Fat	9.1 kg	+0.03%
Protein	10.3 kg	+0.07%
PLI	£282	-

UK HEALTH & REPRODUCTION	
Somatic Cell Count	-22
Mastitis Resistance	1
Lifespan (Days)	57
Fertility Index	0.2
Direct Calving Ease %	-
Maternal Calving Ease %	-
TB Advantage	-
Temperament	-
Ease of Milking	-
Enviro Cow	-

SWISS CONFORMATION	
Dtrs /Hrds in UK Type Chart (see right).	
Final Score	120
Mammary System	126
Feet & Legs	114
Frame	114
Rump	126

UK TYPE	Dtrs/Hrds	Can 0/0	UK 0/0	-%Rel				
				-2	-1	0	+1	+2
Type Merit	+1.74			[Bar chart]				
Mammary	+3.10			[Bar chart]				
Legs & Feet	+1.50			[Bar chart]				
Stature	+1.60			[Bar chart]				
Chest Width	+2.40			[Bar chart]				
Body Depth	+1.70			[Bar chart]				
Rump Angle	+2.60			[Bar chart]				
Rump Width	+0.30			[Bar chart]				
Rear Leg Side	0.00			[Bar chart]				
Foot Angle	+0.80			[Bar chart]				
Fore Udd. Att.	+2.90			[Bar chart]				
Rear Udd. Ht.	+3.00			[Bar chart]				
Udder Support	+1.20			[Bar chart]				
Udder Depth	+4.50			[Bar chart]				
Teat Length	-0.70			[Bar chart]				

Proof Source AUGUST 2023 UK Production, Health & Reproduction and UK Type, AHDB Dairy, Swiss Conformation, Swissgenetics



Bull: Studer's Bs O Malley Owen

## STUDER'S BS O MALLEY **OWEN**

**O MALLEY X SIRKAN X JOLDEN**

AI Code: BR1410      Reg: 31120154242131

Beta casein: A1A2      Kappa casein: BB

Sire: O MALLEY

Dam: STUDER'S BS SIRKAN SINA EX-92

GDam: STUDER'S BS JOLDEN JOY EX-95

**PLI: £163**



UK PRODUCTION		
Dtrs /Hrds	CAN 0/0	UK 0/0
Milk	216 kg	51%Rel
Fat	12.7 kg	+0.06%
Protein	11.1 kg	+0.05%
PLI	£163	-

UK HEALTH & REPRODUCTION	
Somatic Cell Count	-4
Mastitis Resistance	0
Lifespan (Days)	11
Fertility Index	0.8
Direct Calving Ease %	-
Maternal Calving Ease %	-
TB Advantage	-
Temperament	-
Ease of Milking	-
Enviro Cow	-

SWISS CONFORMATION	
Dtrs /Hrds in UK Type Chart (see right).	
Final Score	118
Mammary System	122
Feet & Legs	109
Frame	118
Rump	128

UK TYPE	Dtrs/Hrds	Can 0/0	UK 0/0	-%Rel				
				-2	-1	0	+1	+2
Type Merit	+2.07			[Bar chart]				
Mammary	+2.70			[Bar chart]				
Legs & Feet	+1.00			[Bar chart]				
Stature	+1.50			[Bar chart]				
Chest Width	+2.40			[Bar chart]				
Body Depth	+20			[Bar chart]				
Rump Angle	+2.30			[Bar chart]				
Rump Width	+1.00			[Bar chart]				
Rear Leg Side	-0.10			[Bar chart]				
Foot Angle	+0.1			[Bar chart]				
Fore Udd. Att.	+2.70			[Bar chart]				
Rear Udd. Ht.	+1.50			[Bar chart]				
Udder Support	+1.60			[Bar chart]				
Udder Depth	+3.00			[Bar chart]				
Teat Length	-1.30			[Bar chart]				

Proof Source AUGUST 2023 UK Production, Health & Reproduction and UK Type, AHDB Dairy, Swiss Conformation, Swissgenetics

# BROWN SWISS

PROVEN

Bull: Egochs Dally Simbaboy



## EGOCHS DALLY **SIMBABOY**

DALLY X VIGOR X POLDI

AI Code: BR1198 Reg: 31120102541330

Beta casein: A2A2 Kappa casein: BB

Sire: KULP-GEN PRONTO DALLY  
 Dam: EGOCHS VIGOR SIMBA VG87  
 GDam: EGOCHS POLDI SAMBA EX94

PLI: £198



### UK PRODUCTION

Dtrs /Hrds	SWISS	3313/1766	UK	0/0
Milk	-134 kg			
Fat	-5.4 kg		0%	
Protein	5.3 kg		+0.15%	
PLI	£198		75%Rel	

### UK HEALTH & REPRODUCTION

Somatic Cell Count	-6
Mastitis Resistance	-2
Lifespan (Days)	61
Fertility Index	10.2
Direct Calving Ease %	-
Maternal Calving Ease %	-
TB Advantage	-
Temperament	-
Ease of Milking	-
Enviro Cow	0.9

### SWISS CONFORMATION

Dtrs /Hrds in UK Type Chart (see right).	
Conformation	100
Mammary System	108
Feet & Legs	99
Frame	93
Rump	90

### UK TYPE

	Dtrs/Hrds	Swiss 1555/-	UK 0/0	- %Rel
Type Merit	+0.90			
Mammary	+1.00			
Legs & Feet	+0.40			
Stature	-0.30			
Chest Width	+1.30			
Body Depth	-0.30			
Rump Angle	-1.70			
Rump Width	+0.20			
Rear Leg Side	+2.30			
Foot Angle	+1.00			
Fore Udd. Att.	+2.60			
Rear Udd. Ht.	+0.30			
Udder Support	-0.60			
Udder Depth	+2.90			
Teat Length	+0.70			

Proof Source AUGUST 2023 UK Production, Health & Reproduction and UK Type, AHDB Dairy, Swiss Conformation, Swissgenetics



# Methane Efficiency Explained

Selecting Methane Efficiency is the simplest, lowest-cost way to reduce CH<sub>4</sub> emissions. This is a genetic change that is permanent and cumulative and has an average reliability of 70% with no significant impact on other traits.

UK PRODUCTION	UK HEALTH & REPRODUCTION	UK TYPE
Dtrs/Hrds	Somatic Cell Count	Type Merit
Milk	Mastitis Resistance	Mammary
Fat	Lifespan	Legs & Feet
Protein	Fertility Index	Stature
PLI	Direct Calving Ease %	Chest Width
	Maternal Calving Ease %	Body Depth
	TB Advantage	Angularity
	Temperament	Rump Angle
	Ease of Milking	Rump Width
	Enviro Cow	Rear Leg Side
		Foot Angle
		Fore Udd. Att.
		Rear Udd. Ht.
		Udder Support
		Udder Depth
		Front Teat Pl.
		Teat Length
		Rear Teat Pl.
		Teat Pos. Side
		Locomotion
		Condition Score

Methane (CH<sub>4</sub>) is a colourless, odourless gas made of carbon and hydrogen that enters the atmosphere from both human related activities and natural sources. The average Holstein cow produces nearly 500g CH<sub>4</sub> daily totaling 180kg annually with 95% emitted from burping. Selecting a Methane Efficient bull is easy. The relative breeding value (RBV) index has a mean of 100, a standard deviation of 5, with proofs generally ranging from 85-115. Dairy farmers consistently selecting bulls averaging 105 and higher will meet an overall 20% reduction of CH<sub>4</sub> Emissions by 2050.



All Semex Holstein sires and all Holstein females evaluated via Elevate, the Semex genomic testing platform, will now receive the world's first official Methane Efficiency evaluations.



30 AOT HICCUP-RED

30 AOT HIGHLIFE-RED

31 AOT HOLLIMAN-RED

31 VOGUE REDEYE-P

# RED & WHITE



## AOT HICCUP-RED

RANGER-RED X MARK \*RC X SALVATORE RC

AI Code: H07664 Reg: 653243881794  
Beta Casein: A1A2 Kappa casein: BB

HH1F HH2F HH3F HH4F HH5F HH6F HCDF TD TL CNF TY MWT TV

Sire: 3STAR OH RANGER RED  
Dam: AOT MARK HUCKLEBERRY-RED  
GDam: AOT SALVATORE HICCUP VG-88-5YR-USA

PLI: £710



### UK PRODUCTION

Dtrs/Hrds	US/CAN 0/0	UK 0/0
Milk	906 kg	72% Rel
Fat	32.8 kg	-0.04%
Protein	26.2 kg	-0.04%
PLI	£710	65% Rel

### UK HEALTH & REPRODUCTION

Somatic Cell Count	-26
Mastitis Resistance	-3
Lifespan	168
Fertility Index	8.3
Direct Calving Ease %	-0.3
Maternal Calving Ease %	1.1
TB Advantage	0.8
Temperament	0.62
Ease of Milking	-0.70
Enviro Cow	3.3

### SEMEX TRAITS\*

Immunity	112
Calf Immunity	110
Methane Efficiency	100

### US PTAT

Dtrs/Hrds in UK Type (see right)	Rel 78%
PTAT	2.22
Udder Composite	2.17
Feet & Leg Composite	1.11
Body Composite	0.01
Dairy Composite	0.84

### UK TYPE

	Dtrs/Hrds	US/CAN 0/0					UK 0/0	51% Rel
		-2	-1	0	+1	+2		
Type Merit	+1.85							
Mammary	+2.24							
Legs & Feet	+0.89							
Stature	+0.62							
Chest Width	+0.58							
Body Depth	-0.03							
Angularity	+1.16							
Rump Angle	-0.27							
Rump Width	+1.18							
Rear Leg Side	+0.46							
Foot Angle	+0.32							
Fore Udd. Att.	+1.72							
Rear Udd. Ht.	+2.40							
Udder Support	+0.65							
Udder Depth	+1.20							
Front Teat Pl.	+1.00							
Teat Length	+0.53							
Rear Teat Pl.	+0.63							
Teat Pos. Side	-0.62							
Locomotion	+0.98							
Condition Score	+0.04							

Proof Source: AUGUST 2023 UK Production and Health and Reproduction: AHDB Dairy, Semex traits\*, Immunity Indices: Semex Alliance- Methane Efficiency: Lactanet CDN. UK Type: Holstein UK, Canadian/US PTAT: Canadian Dairy Network/US CDCB as indicated. Genetic trait codes are shown whether the bull is a carrier or not



## AOT HIGHLIFE-RED

LATENITE RED x MARK \*RC x SALVATORE RC

AI Code: H07681 Reg: 653226954608  
Beta Casein: A1A2 Kappa casein: AE

HH1F HH2F HH3F HH4F HH5F HH6F HCDF TD TL CNF TY MWT

Sire: AVANT-GARDE-I LATENITE RED  
Dam: AOT MARK HIGHSTRUNG VG-85-2YR-USA  
GDam: AOT SALVATORE HICCUP VG-88-5YR-USA

PLI: £345



### UK PRODUCTION

Dtrs/Hrds	CAN G/G	UK 0/0
Milk	778 kg	71% Rel
Fat	20.9 kg	-0.11%
Protein	20.2 kg	-0.06%
PLI	£345	64% Rel

### UK HEALTH & REPRODUCTION

Somatic Cell Count	-2
Mastitis Resistance	0
Lifespan	70
Fertility Index	-2.1
Direct Calving Ease %	-0.8
Maternal Calving Ease %	0.3
TB Advantage	0.1
Temperament	1.82
Ease of Milking	0.08
Enviro Cow	1.8

### SEMEX TRAITS\*

Immunity	97
Calf Immunity	103
Methane Efficiency	99

### CANADIAN CONFORMATION

Dtrs/Hrds in UK Type (see right)	Rel 78%
Conformation	9
Mammary System	9
Feet & Legs	6
Dairy Strength	0
Rump	5

### UK TYPE

	Dtrs/Hrds	CAN G/G					UK 0/0	51% Rel
		-2	-1	0	+1	+2		
Type Merit	+1.91							
Mammary	+2.19							
Legs & Feet	+1.73							
Stature	+1.07							
Chest Width	-0.77							
Body Depth	+0.07							
Angularity	+1.58							
Rump Angle	+0.35							
Rump Width	+1.38							
Rear Leg Side	+0.29							
Foot Angle	+0.47							
Fore Udd. Att.	+1.55							
Rear Udd. Ht.	+2.88							
Udder Support	+1.04							
Udder Depth	+0.79							
Front Teat Pl.	+1.25							
Teat Length	+0.38							
Rear Teat Pl.	+1.64							
Teat Pos. Side	0.00							
Locomotion	+1.94							
Condition Score	-1.59							

Proof Source: AUGUST 2023 UK Production and Health and Reproduction: AHDB Dairy, Semex traits\*, Immunity Indices: Semex Alliance- Methane Efficiency: Lactanet CDN. UK Type: Holstein UK, Canadian/US PTAT: Canadian Dairy Network/US CDCB as indicated. Genetic trait codes are shown whether the bull is a carrier or not



## AOT HOLLIMAN-RED

REDEYE-P x HAWAI \*RC x SALVATORE RC

AI Code: H07444 Reg: 653224239277

Beta Casein: A2A2 Kappa casein: AB

HH1F HH2F HH3F HH4F HH5F HH6F HCDF TD TL CNF TY MWT

Sire: VOGUE REDEYE P

Dam: AOT HAWAI HOLLY EX-90-3YR-USA

GDam: AOT SALVATORE HICCUP VG-88-5YR-USA

PLI: £442



## VOGUE REDEYE-P

WEBSTER-P \*RC x KINGBOY x LADD P-RED

AI Code: H06416 Reg: 6440001147

Beta Casein: A2A2 Kappa casein: BB

HH1F HH2F HH3F HH4F HH5F HH6F HCDF TD TL CNF TY MWT TV

Sire: PROGENESIS WEBSTER-P \*RC

Dam: CALBRETT KINGBOY MIRANDA P EX-93-5YR-CAN 7\*

GDam: SNOWBIZ LADD P MARSHMELLOW VG-87-4YR-CAN 10\*

PLI: £313



UK PRODUCTION		
Dtrs/Hrds	US G/G	UK 0/0
Milk	467 kg	73% Rel
Fat	23.7 kg	0.06%
Protein	17.6 kg	0.03%
PLI	£442	66% Rel

UK HEALTH & REPRODUCTION	
Somatic Cell Count	-19
Mastitis Resistance	-2
Lifespan	110
Fertility Index	2.4
Direct Calving Ease %	-1.0
Maternal Calving Ease %	0.6
TB Advantage	2.1
Temperament	0.74
Ease of Milking	1.00
Enviro Cow	1.9

SEMEX TRAITS*	
Immunity	102
Calf Immunity	98
Methane Efficiency	97

US PTAT	
Dtrs/Hrds in UK Type (see right)	Rel 79%
PTAT	2.40
Udder Composite	2.16
Feet & Leg Composite	1.33
Body Composite	0.40
Dairy Composite	0.70

	Dtrs/Hrds	UK TYPE				
		US G/G	UK 0/0	54% Rel		
		-2	-1	0	+1	+2
<b>Type Merit</b>	+0.95					
<b>Mammary</b>	+1.89					
<b>Legs &amp; Feet</b>	+0.92					
Stature	+1.40					
Chest Width	+0.14					
Body Depth	+0.05					
Angularity	+0.09					
Rump Angle	-0.84					
Rump Width	+0.14					
Rear Leg Side	-0.85					
Foot Angle	+1.87					
Fore Udd. Att.	+2.29					
Rear Udd. Ht.	+1.73					
Udder Support	+0.48					
Udder Depth	+1.98					
Front Teat Pl.	+0.12					
Teat Length	+0.05					
Rear Teat Pl.	-0.19					
Teat Pos. Side	-0.36					
Locomotion	+1.25					
Condition Score	+0.51					

UK PRODUCTION		
Dtrs/Hrds	CAN 204/107	UK 0/0
Milk	366 kg	83% Rel
Fat	15.7 kg	0.01%
Protein	10.9 kg	-0.01%
PLI	£313	76% Rel

UK HEALTH & REPRODUCTION	
Somatic Cell Count	-16
Mastitis Resistance	-2
Lifespan	110
Fertility Index	1.4
Direct Calving Ease %	-0.5
Maternal Calving Ease %	0.7
TB Advantage	2.9
Temperament	0.34
Ease of Milking	1.36
Enviro Cow	1.3

SEMEX TRAITS*	
Immunity	102
Calf Immunity	99
Methane Efficiency	105

CANADIAN CONFORMATION	
Dtrs/Hrds in UK Type (see right)	Rel 89%
Conformation	3
Mammary System	4
Feet & Legs	2
Dairy Strength	4
Rump	-5

	Dtrs/Hrds	UK TYPE				
		CAN 53/34	UK 0/0	66% Rel		
		-2	-1	0	+1	+2
<b>Type Merit</b>	+1.02					
<b>Mammary</b>	+1.81					
<b>Legs &amp; Feet</b>	+0.95					
Stature	+1.72					
Chest Width	+0.34					
Body Depth	+0.82					
Angularity	+0.76					
Rump Angle	-2.12					
Rump Width	+0.40					
Rear Leg Side	-0.75					
Foot Angle	+1.43					
Fore Udd. Att.	+2.73					
Rear Udd. Ht.	+0.67					
Udder Support	+0.72					
Udder Depth	+2.12					
Front Teat Pl.	+2.04					
Teat Length	-0.82					
Rear Teat Pl.	+1.38					
Teat Pos. Side	-0.67					
Locomotion	+1.85					
Condition Score	-0.33					

Proof Source: AUGUST 2023 UK Production and Health and Reproduction: AHDB Dairy. Semex traits\*, Immunity Indices: Semex Alliance- Methane Efficiency: Lactanet CDN. UK Type: Holstein UK. Canadian/US PTAT: Canadian Dairy Network/US CDCB as indicated. Genetic trait codes are shown whether the bull is a carrier or not

Proof Source: AUGUST 2023 UK Production and Health and Reproduction: AHDB Dairy. Semex traits\*, Immunity Indices: Semex Alliance- Methane Efficiency: Lactanet CDN. UK Type: Holstein UK. Canadian/US PTAT: Canadian Dairy Network/US CDCB as indicated. Genetic trait codes are shown whether the bull is a carrier or not



Genetics for Life®

Maple Park, Monkton, Prestwick, Ayrshire KA9 2RJ | 0800 86 88 90 | [www.semex.co.uk](http://www.semex.co.uk)